

## BV serie electronics control ball valve



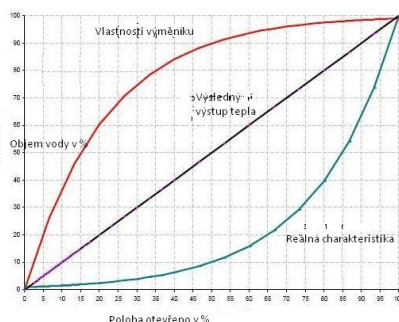
### DESCRIPTION:

BV series electronics control ball valve is designed to regulate the flow of hot or chilled water and for some models, low-pressure steam in response to the demand of a controller in HVAC system

Picture: ball valve BV + adapter BV-BR + actuator of serie DA

### ADVANTAGES:

- BV series electronics control ball valve wide selection for a variety of applications
  - From DN15 To DN50, NPT Connection
  - 2-way & 3-way, Mix & diversion
  - Maintenance-Free Design
  - Maintains equal percentage flow
  - Adjustable flux proportion
  - Blowout-Proof Stem
  - Different Nominal Diameter Styles can be chosen
  - Control Style With On/Off, Floating, or proportional control
- BV series electronics control ball valve designed for heavy working pressure and fitting for all kinds of HVAC working system requirements
  - Working Pressure: 4.0Mpa
  - Cut Pressure: 1.4MPa
  - Max Working Different Pressure:0. 35Mpa KG
  - Max Static Working Different Pressure:0.25Mpa KG
- BV series electronics control ball valve provides accurate control under all load conditions.
- Forged brass body, Chrome-Plated brass or Stainless Steel ball and stem assembly stand (available).



5. BV series electronics control ball valve adopt stainless steel core and stem, fitting for all HVAC project applications:

- Working Temperature -5 to 120 °C
- Can be used in 50% Glycol Liquor
- Can be used in 100 kPa Steam
- Can be used in rust water system

6. BV series electronics control ball valve can be connected with the following actuator of Lufberg DA serie:

Nominal Diameter	DN15~DN32	DN40~DN50
Non-Spring Return DA serie	4Nm	8Nm

7. BV series electronics control ball valve with Poly-Tetra-fluoroethylene (PTFE) Seats and Ethylene-Propylene-Diene-Monomer (EPDM) Double O-Ring Stem Seal

- Supper Resist Abrasion
- Graphite-Reinforced Poly-tetra-fluoroethylene (PTFE) Seats

8. BV series electronics control valve is available in a wide variety of Cvs to cover a broad range of applications :

- VAV Fan Coil System
- Single air-condition system
- Roof model air-condition system
- Boiler System and Cool water system

Technical characteristics:

Nominal Diameter DN(mm)	DN15	DN20	DN20	DN25	DN25	DN32	DN40	DN40	DN50
Rated Flow Factor Kvs	2,5	4	6,3	10	16	25	25	40	63
By-pass Kvs	1,6	2,5	4	6,3	10	12,5	16	20	31,5
Angle Range	0~90°								
$\Delta p$ max	0,35 MPa								
Close-off Pressure	1,36 MPa								
Running Time	See Lufberg DA Series Damper Actuator								
Electronics Control Valve	ON/OFF	See Lufberg DA Series Damper Actuator							
	0-10 V								

Technical structure:

